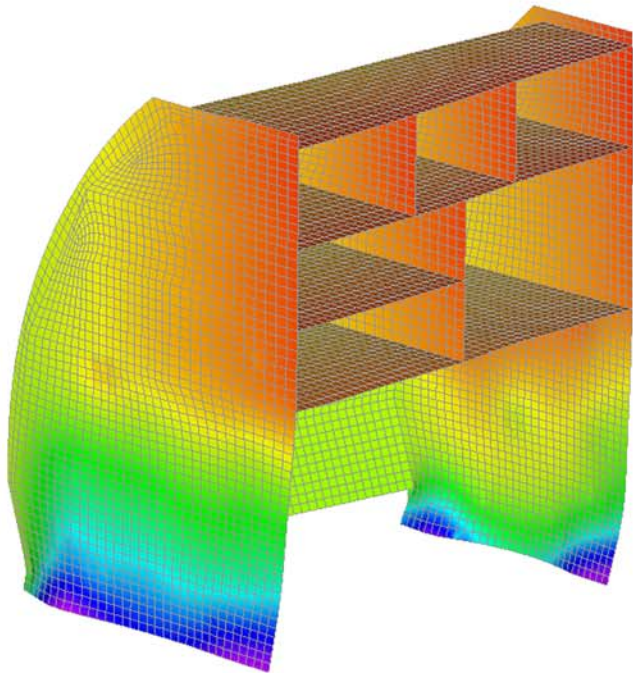


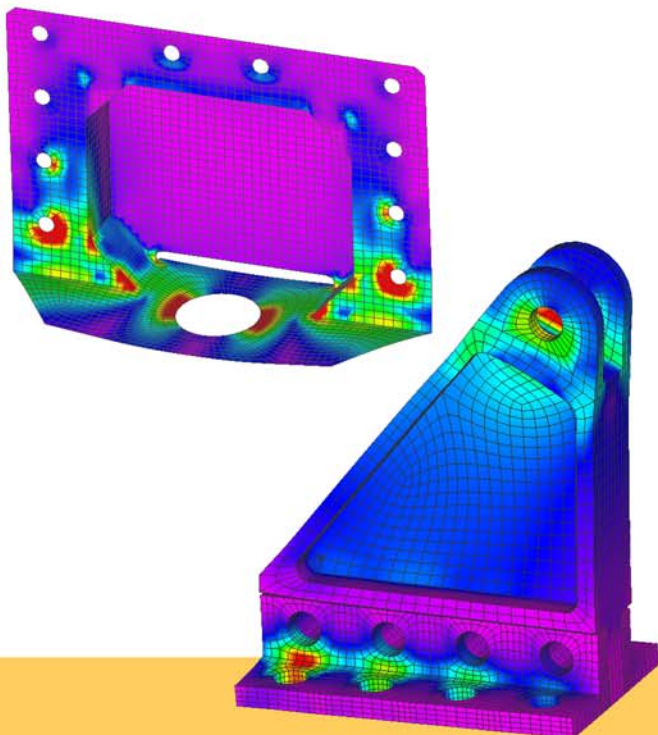
Aircraft Interior Structural Analysis

Finite Element Modeling

Substantiation starts with the creation of a FE model of the honeycomb composite unit including all the weights (structure and content).



Additional detailed FE models of the fittings are generated in order to accurately analyze the behavior of these load carrying parts.



Substantiation

We provide mechanical analysis support to the design team early in the design process. Preliminary analysis eliminates the risks of design weaknesses that the substantiation phase could emphasize later.

Design phase

- ▶ Preliminary Interface Load Analysis Report
- ▶ Pre-STRESS Report

The substantiation documents required by the authorities to certify the unit are generated once the design is frozen and all the details have been defined.

Substantiation phase

- ▶ Interface Load Analysis Report
- ▶ Static Strength Analysis Report



Our Experience

We have a significant experience in the mechanical substantiation of aircraft interior units. Here is a list of past projects our team of structural analysts has written mechanical substantiation reports for.

Project types: VIP / CJ / Airlines

Aircrafts

- ▶ Airbus (A319 / A320 / A330 / A340 / A380)
- ▶ Boeing (B747 / B777)
- ▶ ATR

Types of equipments

- ▶ Galley
- ▶ Video Control Center (VCC)
- ▶ Partition
- ▶ Bedroom
- ▶ Washroom
- ▶ Stowage

Xadice
Engineering

sales@xadice.com

T. +33 (0) 2.40.58.21.12
F. +33 (0) 2.28.02.17.04

Immeuble Mallève 2B - 1, bd Jean Moulin
44100 NANTES - France
www.xadice.com